



Roxtec CF 24 transit

Panolar ve mahfazalar için açılır kapanır kablo/boru geçişi.

Roxtec CF 24 giriş yalıtım malzemesinin alüminyumdan yapılmış cıvatalı çerçevesi bulunur. Sıkıştırma çerçeveye entegredir. Çerçeve açılabilir ve mevcut kabloların etrafına kolayca monte edilebilir. Ürün, gerekli tüm bileşenleri içeren, kullanıma hazır kitle halinde sunulur.



- Hafif
- Yüzeyi verimli kullanır
- Yenileme için mükemmel

Ürün özellikleri



Yangın sınıflamalı



IP/UL NEMA

Montaj yapılacak yapı



Panolar ve muhafazalar

Derecelendirmeler ve sertifikalar

Yangın

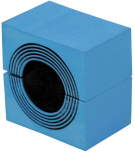
- EN 45545 E30 standardına göre E/EI derecesi

Sızdırmazlık

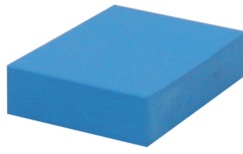
- IP 66/67

Yalıtım elemanı verileri

Yalıtım elemanları



Multidiameter™ özellikli CM modül



CM tek parça sıkıştırma modülü



C Sabitleme Plakası



Kayganlaştırıcı

Ayrıntılı bilgi için lütfen [roxtec.com](https://www.roxtec.com) adresini ziyaret edin.

Önceden yapılandırılmış geçiş kiti

mm/kg



CF 24/8



CF 24/12



CF 24/28

Başlık	Konfigürasyon	Dış boyutlar WxHxD	Açıklık boyutları w x h	Ağırlık	Madde Numarası
CF 24/8	8x (10.0-25.0)	209 x 100 x 30	170(-2) x 60	1.5	CF00000240035
CF 24/12	8x (3.5-16.5), 4x (9.5-32.5)	209 x 100 x 30	170(-2) x 60	1.5	CF00000241235
CF 24/28	16x (3.5-16.5), 12x (3.5-10.5)	209 x 100 x 30	170(-2) x 60	1.5	CF00000242835



The product information provided by Roxtec does not release the purchaser of the Roxtec system, or part thereof, from the obligation to independently determine the suitability of the products for the intended process, installation and/or use.

Roxtec gives no guarantee for the Roxtec system or any part thereof and assumes no liability for any loss or damage whatsoever, whether direct, indirect, consequential, loss of profit or otherwise, occurred or caused by the Roxtec systems or installations containing components not manufactured by an authorized manufacturer and/or occurred or caused by the use of the Roxtec system in a manner or for an application other than for which the Roxtec system was designed or intended.

Roxtec expressly excludes any implied warranties of merchantability and fitness for a particular purpose and all other express or implied representations and warranties provided by statute or common law. User determines suitability of the Roxtec system for intended use and assumes all risk and liability in connection therewith. In no event shall Roxtec be liable for indirect, consequential, punitive, special, exemplary or incidental damages or losses.

The Roxtec products are offered and sold in accordance with the conditions of the Roxtec General Terms of Sales. The latest version of the Roxtec General Terms of Sales can be downloaded from <https://www.roxtec.com/en/about-us/about-roxtec/general-terms-of-sales/>

We reserve the right to make changes to the product and technical information without further notice. Any errors in print or entry are no claims for indemnity. The content of this publication is the property of Roxtec International AB and is protected by copyright.

This document was generated on: 2024-04-06